

RFID Entry Key Card Lock for Hotel Doors SL-HA2



1, Features:

- Lock type: Card lock for hotel doors SL-HA2
- Card type: M1FARE-1 card / T555 / EM430 / apartment ID board
- Unlock method: swipe + key
- Card reading distance: less than 3CM
- Material: inner quality steel plate outer 304 stainless steel
- Color: silver / gold / red ancient / black
- Application: hotel / school / office, etc.Door thickness: 30-55mm
- Working voltage: 6V (4x AA battery)
- Underheating machine: below 4.8V
- Battery life: support 5000 lockout unlocking operation
- Unlock record: latest 255

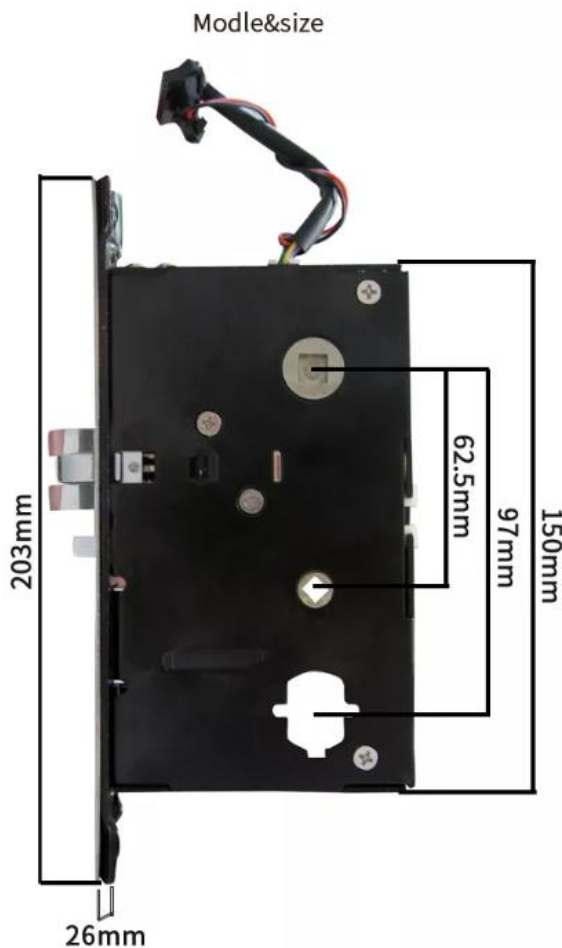
2, Specification:

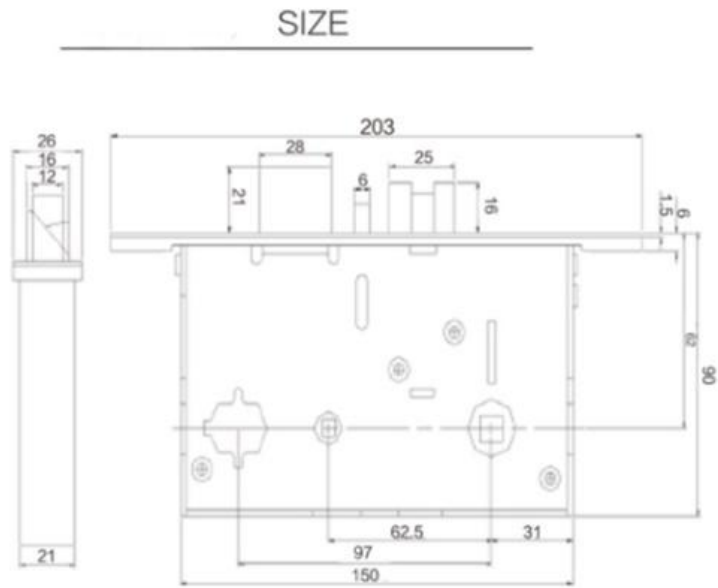
Material	Inner steel plate Outer 201 stainless steel
Mortise	U.S Mortise with 5 Latches
Door Type	Wooden door, composite door
Power supply	6V (4x AA batteries)
Unlock method	swipe + key
Low voltage worming	Yes
Card reading distance	less than 3CM
Color:	Silver / gold / red ancient / black
Application:	hotel / school / office/apartment, etc.
Door thickness:	30-55mm
Software	Yes
Type	Hotel management software
OS	Windows XP/Vista
Card Type	Mifare Card/ T555 / EM430 / apartment ID board
Card reader	Hotel lock encoder
Environment & Verification	
Working Temperature	-20°C-50°C
Working Humidity	20%-70%
Backup unlock mechanism	Mechanical Key
Dimension (L*W)	310x75x19mm
Warranty:	2 year
Weight:	3KG
Battery life	support 5000 lockout unlocking operation

3, Size:

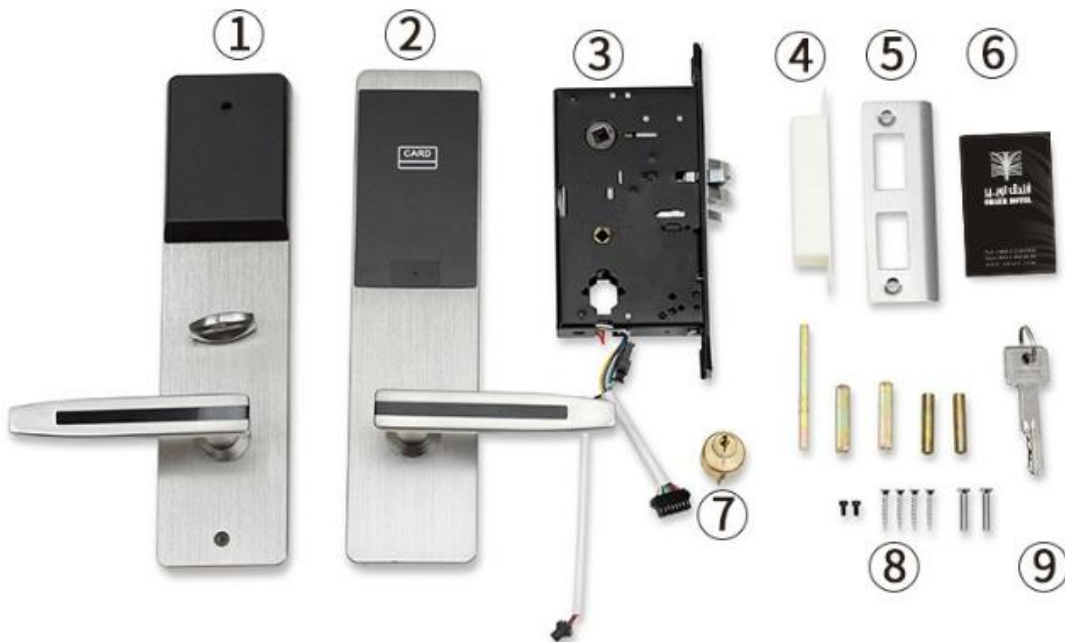


4, Lock Mortise:





6, Packing Details



1: Front panel

2: Real panel

3: Lock mortise

4: Lock strike box

5: Lock strike plate

6: Room card

7: Mechanical lock cylinder

8: Fix mounting screws

9: Mechanical key

5, Installation Drawing

